



From mountain to sea

Keithhall School

Handbook 2023/24



Contents

Introduction to Keithhall School	4
Our Vision, Values and School Ethos	6
Curriculum	7
Assessment and Reporting	11
Transitions (Moving On)	13
1 Admissions	14
2 Placing requests & School Zones	15
Support for Children and Young People	16
4 Getting it Right for Every Child	16
5 Wellbeing	16
6 Children's Rights	18
7 The Named Person	19
8 The Child's Plan	20
9 Educational Psychology	21
10 Enhanced Provision & Community Resource Hubs	21
11 Support for Learning	22
12 Child Protection	22
13 Further Information on Support for Children and Young People	23
Parent & Carer Involvement and Engagement	25
14 Parental Involvement and Engagement Strategy	25
15 Parental Engagement	25
16 Communication	25
17 ParentsPortal.scot	26
18 Learning at Home	27
19 Parent Forum and Parent Council	27
20 Parents and School Improvement	27
21 Volunteering in school	27
22 Collaborating with the Community	27
23 Addressing Concerns & Complaints	28
School Policies and Useful Information	29
24 Attendance	29
25 Holidays during term time.	30

26	Dress Code	30
27	Clothing Grants	31
28	Transport	31
29	Privilege Transport	31
30	Early Learning & Childcare Transport	32
31	Special Schools and Enhanced Provision	33
32	School Closure & Other Emergencies	33
33	Storm Addresses	34
34	Change of address and Parental Contact Details	34
35	Anti-bullying Guidance	34
36	School Meals	35
37	Healthcare & Medical	37
38	Exclusion	38
39	Educational Visits	39
40	Instrumental Tuition	39
41	Public Liability Insurance	40
42	School Off Site Excursion Insurance	40
43	Data we hold and what we do with it.	41
44	The information we collect from you	41
45	Your Data, Your Rights	41
46	Parental Access to Records	42
47	Information Sharing	42
48	ScotXed	42

Further Information	44
----------------------------	-----------

All information in this handbook is correct as of November 2023

Introduction to Keithhall School

Welcome to Keithhall School. We take pride in the fact that Keithhall is a happy and hardworking school with a real sense of team spirit. We hope that your child's time here is enjoyable and rewarding.

Parents and guardians play a very important part in the life of the school and the wider community. Therefore, we would like you to feel welcome in school and to play an active part in your child's education. We hope that the partnership between home and school will be productive and enjoyable.

This Aberdeenshire Council handbook explains what you can expect of the school and also indicates what the school expects of you in the way of partnership, help and support. It has been designed to inform you of as many aspects of life at Keithhall School and has been written in response to School Handbook Guidance (Scotland) Regulations 2012.

The purpose of this booklet is to provide you with information that will be useful now and during your child's time in primary school.

School Contact Details

Head Teacher	Nicole Scott
School Name	Keithhall School
Address	Keithhall
Telephone Number	01467 536930
Website	keithhall.sch@aberdeenshire.gov.uk
Parent Council Email	keithhallschoolparentcouncil@gmail.com

Adverse weather and emergency closure

<https://online.aberdeenshire.gov.uk/Apps/schools-closures/>

Keithhall School is a non-denominational school with a role of 35 pupils. The school serves the Kinmuck and surrounding catchment area.

Most children transfer to Inverurie Academy when leaving Keithhall School. Inverurie Academy has nine associated feeder schools and they all form the Inverurie Community Schools Network (CSN). Within the Inverurie CSN, services operate in an integrated framework in order to ensure that each child has the fullest opportunity to maximise their potential.

Keithhall School has two classrooms. It has a large playground and has access to a field owned by Keithhall Estate which can be used for sporting activities. We are surrounded by woodlands which provide an idyllic setting and a rich resource for outdoor education.

Keithhall School provides education for children aged 4½ - 12 – i.e. from P1 – P7.

The school has a supportive Parent Council which organises events and meetings are well attended. In line with legislation every parent is a member of the Parent Forum. The Parent Council meets regularly to discuss the ongoing work and life of the school.

Community links are a valued and the school is well supported by the local community.

Pupils are encouraged to become involved in the work of the school and its improvement. With this in mind all pupils are involved in enterprise activities and contribute to the Pupil Council, Eco Group activities, Rights Respecting Group and Learning Council Group. We are very proud of the contribution our pupils make to the life of our school.

Devolved budgets are managed in accordance with authority guidelines to support planned improvements in the school.

We aim to create an ethos of achievement and work to establish an environment in which all our pupils, staff and members of our community are able to fulfil their potential. We focus on ensuring all our pupils are happy, included, nurtured and feel safe at all times.

The School Day

9.00 am – 10.30 am

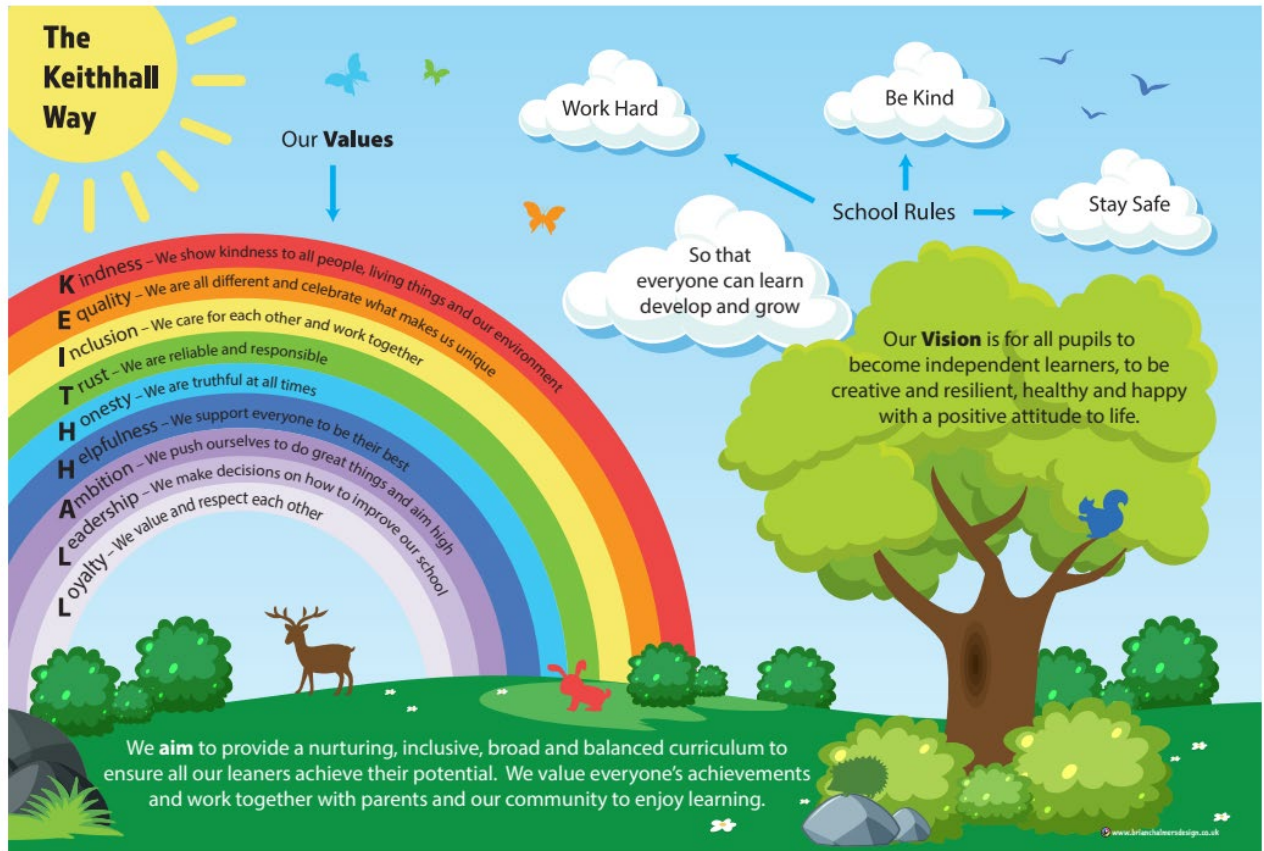
10:30 am – 10:45 am Break

10.45 am – 12.30 pm

12:30 pm – 1:30 pm Lunch

1.30pm – 3.15pm

Our Vision, Values and School Ethos



Curriculum

Within our school, we aim to provide a curriculum that is both inclusive and ambitious for all – a curriculum which is both academically challenging as well as providing opportunities to develop skills for learning, life and work.

Our curriculum will be based around the four capacities of Curriculum for Excellence – to ensure our pupils are successful learners, confident individuals, effective contributors, and responsible citizens. Our curriculum will also reflect the principles of curriculum design to ensure breadth, depth, personalisation & choice, challenge & enjoyment, progression, coherence, and relevance. We will therefore, have a curriculum which we will adapt continuously over time to meet the needs of our pupils.

Following the principles of Curriculum for Excellence, achievement of children and young people is celebrated in its broadest sense. This means looking beyond formally assessed learning, to recognise activities like volunteering and participation in arts, sports, and community-based programmes. This approach complements the nurturing and aspirational outcomes of Getting It Right for Every Child, and our aim in Aberdeenshire to overcome inequality by Raising Attainment for All, promoting Equity and Excellence in schools, and Closing the Gap. Further information on the school's approach to Curriculum for Excellence including information for parents, can be found on the school website at: <https://keithhall.aberdeenshire.sch.uk>

Curricular Areas

- **Literacy and English Language:** Listening, Talking Reading, and Writing.
 - **Numeracy and Mathematics:** Number, Money and Measure, Information Handling, Shape, Position and Movement.
 - **Health & Wellbeing:** Mental, emotional, social, and physical wellbeing, Physical education, activity and sport, Food and health, Substance misuse, Relationships, sexual health and parenthood.
 - **Social Studies:** People, past events and societies, People, place and environment, People, society, economy, and business.
 - **Sciences:** Planet Earth, Forces, electricity and waves, Biological Systems, Materials, Topical Sciences.
 - **Technologies:** Technological developments in society, Business technology skills and knowledge, Computing science, Food and textiles, Craft, design, engineering, and graphics.
 - **Expressive Arts:** Music, Drama, Art and Design and Dance.
 - **Religious and Moral Education:** Christianity, World Religions, Development of beliefs and values.
 - **Modern Languages:** French and Spanish
-

Curriculum Design

Our curriculum is designed based on the following 7 principles:

- Challenge and enjoyment
- Breadth
- Progression
- Depth
- Personalisation and choice
- Coherence
- Relevance

Developing Young Workforce

Developing the Young Workforce (DYW) is the Scottish Government's Youth Employment strategy to better prepare young people for the world of work.

[Developing the Young Workforce](#) is embedded in [Scotland's Curriculum](#) and along with the Curriculum for Excellence and [Getting it Right for Every Child \(GIRFEC\)](#) it is one the three main building blocks underpinning Scotland's education offer for children and young people.

The [DYW Aberdeenshire](#) priorities are as follows:

- Development of the **DYW Curriculum** offer including embedding the [Career Education Standard](#) Entitlements 3-18 and the further development of BGE pathways and Foundation Apprenticeships in the senior phase.
- **Skills Development** – embedding skills for learning, life and work (**Metaskills**) and skills profiling
- **Partnership** Development, including partnership with employers
- Support for **Equalities**

As part of the 3-18 curriculum, pupils will develop [skills for learning, life, and work](#) and [Skills 4.0 and Metaskills](#). Throughout their time in school, from Early Years onwards, all pupils will have an opportunity to engage with employers, through experiences like workplace visits, career talks, employability events and courses, work experience and curriculum based activities. They will also have the opportunity to learn about further and higher education as well as different career pathways into employment.

In S4-6, pupils will be given the opportunity to study for vocational qualifications, including Foundation Apprenticeships, alongside the more traditional qualifications.

Further information for parents on Foundation Apprenticeships can be found [here](#)

Curricular Levels

Early	The pre-school years and P1, or later for some.
First	To the end of P4, but earlier or later for some.
Second	To the end of P7, but earlier or later for some.
Third and Fourth	S1 to S3, but earlier for some. The fourth level broadly equates to Scottish Credit and Qualifications Framework level 4. The fourth level experiences and outcomes are intended to provide possibilities for choice and young people's programmes will not include all the fourth level outcomes.

1+2 Language Learning

The Scottish Government policy 'Language Learning in Scotland: A 1+2 Approach' is now embedded in our curriculum. Children are growing up in a multilingual world and to allow them to take their place as global citizens, they need to be able to communicate in many settings. This approach entitles every child and young person to learn two languages at school in addition to their mother tongue language.

In our School the first foreign language will be French. This language will be learned from P1 (in Primary School) through to S3 (in secondary school).

If you would like your child to access Gaelic Medium Education and they have not yet started to attend a primary school you can make a request for an assessment of need for Gaelic Medium Primary Education (GMPE). For more information, please go to:

<http://aberdeenshire.gov.uk/schools/information/gaelic-in-schools/>

The parent or carer of any child or young person can make a request for their child to attend to any school which offers GMPE. This will enable your child to be taught by specialist staff. As there are currently no schools in Aberdeenshire which have GME provision learners are transported to school in Aberdeen City.

Further Information

Further information on the school's approach to Curriculum for Excellence including information for parents, can be found on the school website at:
keithhall.sch@aberdeenshire.gov

More general information on Curriculum for Excellence and the new Qualifications can be found by clicking on the hyperlinks below.

Policy for Scottish Education:

<https://education.gov.scot/about-education-scotland/policies-and-information/education-policy-and-legislation/>

Early Learning & Childcare:

<https://education.gov.scot/learning-in-scotland/sector/early-learning-and-childcare-elc/>

Broad General Education (Pre school – S3):

<https://education.gov.scot/parentzone/curriculum-in-scotland/broad-general-education/>

Senior Phase and beyond (S4 – 16+):

<https://education.gov.scot/scottish-education-system/senior-phase-and-beyond>

National Qualifications:

<https://www.sqa.org.uk/sqa/58062.3806.html?pMenuID=5605>

Assessment and Reporting

Pupils move through the curriculum at their own pace. A wide range of assessment techniques are used in school depending on what is being assessed and the reason for the assessment e.g.

- Observation of what the pupils “say”, “write” and “do”.
- Homework
- Self and peer assessments
- Marking of class work and other individual/class assessments
- Ongoing tracking and monitoring procedures in school
- Scottish National Standardised Assessments (P1, P4, P7 and S3)

Progress will be evidenced using a variety of approaches that best reflect the learning that has taken place and will track the skills that your child or young person is developing.

Assessment is ongoing throughout the Broad General phase and is a continuous process which influences the goals set for your child. As part of assessment, each year children and young people in P1, P4, P7 and S3 will participate in the Scottish National Standardised Assessments (SNSA). These national assessments are completed online and provide teachers with immediate feedback on each child or young person’s progress in literacy and numeracy. Children and young people do not have to prepare or revise for the assessments, which take place as part of normal learning and teaching. The assessments do not have any pass/fail mark and the results are used to help teachers plan the next steps in learning for each child/young person. Further information on SNSA is available at

<https://www.gov.scot/publications/scottish-national-standardised-assessments-purpose-and-use/>

The results of children’s achievements are discussed with them regularly so that they are involved in taking responsibility for their own learning. This may take the form of oral discussion and/or written comment. In this way, it is hoped to assist the pupil identify what has been learned and the next steps to their learning. Children regularly set targets in their work.

Parents will be informed of progress:

- through pupil profiles/learning logs
- through parent consultation evenings and other meetings
- through curriculum/learning events/parent workshops
- by the annual school report
- Individual Education Plans and associated documents

Parents and carers are encouraged to contact the school at other times throughout the year to discuss their child’s progress.

Secondary schools: Assessment & Reporting in the Senior Phase (S4-S6)

In the Senior Phase pupils embark on the National Qualifications.

As pupils enter this phase, they are set an aspirational target grade for each subject they are studying. This forms the basis for learning conversations between staff and pupils to discuss progress and identify next steps. This is shared with parents/carers through TRACKING Reports.

Further Information on Assessment, Reporting & Profiling can be found on Parentzone:

<https://education.gov.scot/parentzone/curriculum-in-scotland/assessment-in-the-senior-phase/>

Transitions (Moving On)

We understand that transitions especially at P1 and S1 stages can be anxious times for parents and pupils. At Keithhall School we have arrangements in place to support transitions and these are outlined below.

Transfer to Primary 1

In order to support and ease transition into P1, we arrange a series of induction events/meetings for you and your child. These events are planned to allow you and your child to become familiar with the school building, to meet staff, to meet with the other children including your child's buddy and to find out about life in school and what you can do to support your child's transition into P1. The induction process starts in your child's pre-school year, with P1 staff arranging to visit your child in their pre-school setting wherever possible in order to begin to get to know your child.

Induction meetings are arranged for parents around May/June in order to share information about starting school and how you can help your child at home. This is also an opportunity for parents to meet their child's teacher and to ask any questions or share any information.

At these induction meetings, parents are issued with a range of materials designed to support children's learning at home and parents are asked to complete a range of forms to gather information about e.g. your child's medical needs, contact addresses, special needs etc.

Our prospective P1s also have the opportunity to come into class for a series of induction sessions in June. This allows the children to begin to get to know their classmates and their teacher as well as familiarising themselves with the school buildings and classroom routines.

Parents are also invited to join their P1 children for a school lunch during their first visit in June.

Information communicating details of P1 induction arrangements along with dates will be communicated directly to prospective P1 parents around April.

Transitions Between Stages

For some children, the thought of moving onto their next class/teacher can also be an anxious time. Again, we have structures in place to support these transitions. Teachers share planning and work together on school improvement projects helping to ensure a commonality of expectations and approaches. Time is arranged for teachers to hand over information regarding the learning needs of the pupils transferring from class to class.

Around June of each year "step up" time is also arranged where pupils can meet their next teacher and their classmates. Opportunities throughout the year for children to work on joint projects, e.g. dancing, chess, enterprise challenges help to ensure that the children have opportunities to work with other staff and pupils.

If you have any particular concerns regarding transitions, please make an appointment to see the head teacher.

Parents of children joining the school in classes other than P1 or in the middle of a school session should contact the head teacher who will agree a start date for the child and make arrangements for the parents and child to visit the school. Any transfer information, including school work, can be helpful in supporting your child's continued education. Records from other Aberdeenshire schools are automatically transferred internally but when the school is out with the Authority, the school will contact the child's previous school to obtain the records.

Transfer to Secondary Education

Most children from Keithhall School attend Inverurie Academy in Inverurie. (Telephone Number 01467 532290).

Keithhall School is part of the Inverurie Community Schools Network.

An induction programme for P7 is in place to help ease the transition into S1. P7 pupils spend 3 days at Inverurie Academy towards the end of the summer term. Further information is communicated to parents about the induction calendar for secondary school around February each year. Parents also have the opportunity to visit Inverurie Academy where information will be shared and questions can be asked.

Liaison between Keithhall Primary and Inverurie Academy is very good. During the P7 year, pupils have many opportunities to join with P7 pupils from the other Inverurie Community Schools Network. Transition projects, residential trips and other ad hoc activities are arranged for P7 pupils to get together.

Information about our P7 pupils is shared with guidance staff at the academy to help support appropriate continuity of education. Parents are welcome to attend these information sharing meetings, especially when additional support has been provided previously.

Inverurie Community Campus staff also visit our pupils in Keithhall Primary where information is shared and questions can be asked.

This is also an opportunity for parents to meet their child's guidance teacher and to ask any questions or share any information about your child's needs which will help support them through any transition.

Visit Parentzone for more information about transitions:

<https://education.gov.scot/parentzone/my-child/transitions>

Visit Parentzone for more information about transitions:

<https://education.gov.scot/parentzone/my-child/transitions>

1 Admissions

Nursery Admissions.

Early in each calendar year, all parents/carers should complete an application form available on the 'Nurseries and childcare' pages of the Aberdeenshire website. The application form can be found here:

<https://online.aberdeenshire.gov.uk/schooladmissions/elc>

Primary Admissions

New entrants to P1 are enrolled early in the calendar year for entry to school in August. This is for children who will be five on or before the school start date in August. Those that have their fifth birthday between the August start date each year and the end of February the following year, may also be admitted. Go to:

<http://aberdeenshire.gov.uk/schools/information/primary-school-registration/>

To view the school catchment area for your address, go to:

<https://aberdeenshire.gov.uk/schools/school-info/admissions/school-zones/>

2 Placing requests & School Zones

For all advice and information on placing requests and guidance on school catchment/zones go to:

<http://aberdeenshire.gov.uk/schools/information/choosing-a-school>

Your child would normally attend a school within the school catchment area (zone) close to where you live. However, you can request that your child attends a school in another zone (out of zone). Please follow the links for more info:

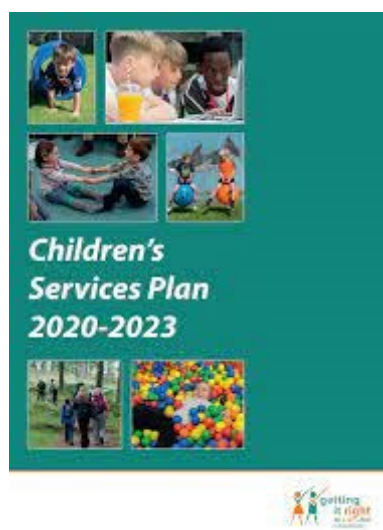
[Out Of Zone Placing Request Policy & Procedures](#)

Support for Children and Young People

4 Getting it Right for Every Child

Getting It Right for Every Child (GIRFEC) is the national policy approach in Scotland which aims to support the wellbeing of all children and young people, by offering the right help, at the right time, from the right people. Certain aspects of this policy have been placed in law by the Children and Young People (Scotland) Act 2014.

Aberdeenshire's Children's Services Planning Partners are strongly committed to fully embedding the Getting it Right for Every Child approach. This shared commitment is expressed through the vision statement of Aberdeenshire's Children's Services Plan, which Aberdeenshire's Schools play a key part in delivering:



Its vision is that:

‘Our commitment to Aberdeenshire’s children and young people, is to provide them with the right support, in the right place, at the right time.

In helping them reach their individual potential and goals, we will work together to make Aberdeenshire the best place in Scotland to grow up’

You can find out more about our Children's Services Plan at:

<http://www.girfec-aberdeenshire.org/who-we-are/our-childrens-services-plan/>

5 Wellbeing

The Getting it Right approach is reflected in agreed local processes for assessing need and planning support for individual children and young people. In Aberdeenshire, we have a strong ethos of partnership working, with a shared sense of professional accountability for improving the wellbeing of children, young people and families.

Getting it Right for Every Child (GIRFEC) is about safeguarding, supporting and promoting children and young people's wellbeing, and ensuring support is provided if and when this is needed. GIRFEC is:

- Child-centred
- Holistic
- Accessible and responsive
- Joined up
- Rights-based

The concept of Wellbeing is at the heart of the GIRFEC approach and is defined in Part 18 (s96) of the Children & Young People (Scotland) Act 2014, through eight Wellbeing Indicators. These Wellbeing Indicators reflect the Scottish Government's aspiration for all Scotland's children and young people to be Safe, Healthy, Achieving, Nurtured, Active, Respected, Responsible and Included.

These 8 Wellbeing Indicators need to be met in order for children and young people to grow and develop into confident individuals, effective contributors, successful learners and responsible citizens.



The Getting It Right approach means services will work in partnership with children, young people and their parent/carer(s) and we want every child at our school to feel happy, safe and supported to fulfil their potential.

Taking care of our children's well-being and making sure they are alright - even before they are born - help us ensure the most positive outcomes for them later in life. It gives them the potential to grow up ready to succeed and play their part in society.

Getting it right for every child is a programme that aims to improve outcomes for all children and young people. It promotes a shared approach that:

- Builds solutions with and around children and families
- Enables children to get the help they need when they need it
- Supports a positive shift in culture, systems and practice
- Involves working together to make things better

Getting it right for every child is the foundation for work with all children and young people, including adult services where parents are involved. It builds on universal health and education services, and is embedded in the developing early years and youth frameworks.

Developments in the universal services of health and education, such as Better Health Better Care and Curriculum for Excellence, are identifying what needs to be done in those particular areas to improve outcomes for children.

The Getting it Right approach looks at eight areas of 'well-being'. These are recognised as areas in which children and young people need to progress in order to do well now and in the future. They allow those responsible for the care and support of children - including members of their own families - to look at a situation in a structured way that will help them identify any needs and concerns and plan with the child and family any action they need to take.

The approach gives them a common language and a way to gather information about a child's world, making sure the child is growing and developing, and has everything they need from the people who look after them both at home and in the wider community.

It also encourages practitioners to think about who else might need to be involved (for example a teacher might need to contact other professionals to make sure that an education improvement plan with the child and family was meeting all the child's needs).

For more information about Aberdeenshire's approach to GIRFEC go to;
<http://www.girfec-aberdeenshire.org/what-is-girfec/>

6 Children's Rights

Every child/young person has rights in addition to human rights. These are called Children's Rights, and they're written in the United Nations Convention on the Rights of the Child. They outline what children need to give them the best chance of growing up happy, healthy and safe. Adults such as parents, schools, councils and governments have a responsibility to make sure that children access their rights.

The United Nations Convention on the Rights of the Child is a statement of children's rights. It has 54 articles that cover all areas of a child's life and it sets out the political, civil, economic, social and cultural rights that all children are entitled to.

Scotland is in the process of incorporating the UNCRC into Scots Law. This will ensure that rights are binding rather than guiding and all levels of government must apply the rights in legislation, policy and practice.

Children and young people are learning about these rights in school and some schools take part in The Rights Respecting Schools programme, a UNICEF

accredited programme to support schools in developing rights based practice as part of the school ethos.

In our schools we will:

- Raise awareness of Children's Rights, and how rights can be accessed
- Ensure Children's Rights are provided and protected by the adults who support our children and young people
- Provide a variety of opportunities for children and young people to get involved in decision-making
- Make sure children and young people's views influence how we develop services
- Support children and young people to express their views
- Listen to and act on children and young people's views on what we do well, and what we could do differently

More information for parents on Children's Rights can be found here

[Parent Club Childrens Rights leaflet.pdf](#)

Aberdeenshire Council has endorsed a Children and Young People's Charter. You can find out more about Children's Rights and opportunities for participation at:

<http://www.girfec-aberdeenshire.org/home/children-and-young-people/>

7 The Named Person

Prevention and early-intervention are seen as key to the Getting It Right approach in achieving positive outcomes for children and young people. By providing support at an early stage, most difficulties can be prevented from escalating.

One way the Scottish Government has decided this should be taken forward, is by making a Named Person available to every child and young person in Scotland. From birth to prior to starting school, the Named Person Service is provided by your Health Visitor. The Education Service provides the Named Person Service for all children on entry to Primary One, until aged 18 (or beyond where a young person remains at secondary school). In Aberdeenshire the Named Person will be either the Primary Head Teacher or Deputy Head Teacher and in Secondary School, the Named Person will be that young person's allocated Principal Teacher of Guidance (with a few exceptional circumstances).

The purpose of the Named Person role is to make sure children, young people and parents have confidence that they can access help or support no matter where they live or what age the child is. Acting as a central point of contact, the Named Person can help children, young people or parents/carers get the support they need, if and when they need it.

The Named Person can help by:

- Providing advice, information, or support
-

- Helping a child, young person, or to access a service or support
- Discussing or raising a wellbeing concern about a child or young person.
- Being a key contact point for other professionals if wellbeing needs are identified for a child or young person.

There is no obligation for children and young people or parents to accept any offer of advice or support from the Named Person. Non-engagement with a Named Person is not in itself a cause for concern. The Named Person Services is currently delivered on a national policy basis.

For more information you can contact your child or young person's Named person directly, or go to:

<https://www.gov.scot/policies/girfec/named-person/>

The Named Person for your child/young person is: Mrs Nicole Scott

8 The Child's Plan

The *Getting It Right* approach makes sure children and young people are provided with a range of support, which is proportionate and put in place to meet assessed need. This is reflected in Aberdeenshire's staged approach to assessment and planning for individual children and young people, shown below.

- Universal Services (Core Provision)
- Universal Services (Support Generally Available)
- Universal Services (Targeted Support) Targeted and Specialist Services (Multi-Agency)



For a small minority of children or young people, there might be higher levels of wellbeing need or risk identified. These children may require a level of targeted

support, which needs to be coordinated on a single or multi-agency basis through a Child's Plan.

Where a child or young person needs one or more targeted supports, the benefit of a Child's Plan will be discussed with them and their parents/carers. An assessment using the National Practice Model (My World Triangle/Resilience Matrix) would help to identify any wellbeing needs (*Safe, Healthy, Active, Nurtured, Achieving, Resected, Responsible, Included*), and highlights strengths and pressures in the child's situation. Families are fully involved as key partners in these discussions.

The Child's Plan will outline what action will be taken by the child, their family and professionals, and detail how these supports aim to help improve the child or young person's Wellbeing and overcome any difficulties.

A Lead Professional will be identified to co-ordinate and manage any Child's Plan.

Information is available on the Aberdeenshire *Getting It Right for Every Child* Website:

<http://www.girfec-aberdeenshire.org/>

9 Educational Psychology

The Educational Psychology Service (EPS) provides a service across Aberdeenshire from the early years to school leaving age. Educational Psychologists work with children, young people, parents and carers, educational staff, local authority colleagues and a wide range of other professionals including health professions, social work, early years partner providers and post school training and education providers.

When there are concerns about a child or young person's learning or wellbeing, an Educational Psychologist can support others to assess needs and problem solve their way through potentially difficult and complex situations. Consultation with people who know the child best forms the basis of Educational Psychology assessment. The purpose is to explore and understand the concern and support people to come up with solutions that will work in that particular context. More information about Consultation can be found on the Educational Psychology Service website:

<https://blogs.glowscotland.org.uk/as/aberdeenshireeps/about-us/>

The website also has a range of helpful resources available for all parents:

<https://blogs.glowscotland.org.uk/as/aberdeenshireeps/parent-information/>

10 Enhanced Provision & Community Resource Hubs

Aberdeenshire Council is committed to supporting children and young children to be educated in local schools through providing the right support in the right place at the right time. By enhanced provision we mean that a local primary and secondary school has an enhanced level of resources, such as access to a sensory room and life skills area; and support for learning staff who have an enhanced level of expertise to meet a range of needs.

Further enhancement is available through the community resource hub, for a small minority of children with severe and complex needs, who regardless of chronological age are making very small steps in learning and are at the early levels of learning.

The enhanced provision centres and community resource hubs can offer outreach support to mainstream schools, short term assessment placements and flexibility (e.g. blended places).

For more information on all our resources and policies go to:

<http://asn-aberdeenshire.org/>

11 Support for Learning

At times in their lives all children may require support for learning for a range of reasons. Some children may need a lot of support all the way through school. Others may need only a small amount for a short time.

A child is said to have additional support needs if they need more, or different, support to what is normally provided in schools or pre-schools to children of the same age. Reasons for requiring support might include:

- Missing school because of an illness or long-term condition
- Having a physical disability
- Being a young carer
- Communication difficulties
- Being particularly able
- Changing school a lot
- Being looked after or in care
- Difficulty in controlling behaviour
- Having a difficult family situation
- Suffering a bereavement

Social and emotional factors Each school cluster has an allocation of Teachers of Additional Support for Learning (ASL) who are employed to support pupils with additional support needs. They work across each cluster in primary and secondary. In partnership with school staff, parents and other professionals (if appropriate), they identify barriers to learning, assess children's needs and support learning and teaching through a relevant curriculum.

Pupil Support Assistants (PSAs) assist teachers in promoting achievement and raising the standards of pupil attainment. They provide general support in relation to the needs of the class and individuals' care, health and wellbeing and safety and to promote a secure and safe environment.

12 Child Protection

[National Guidance for Child Protection Scotland 2021](#)

Child protection is the responsibility of all who work with children and families regardless of whether or not they come into direct contact with children. All workers

must be fully informed of their responsibilities in respect of keeping children safe. All services working with children, young people and families are expected to identify and consider the wellbeing of children and to share concerns appropriately.

Equal Protection from Assault (Scotland) Act 2019.

This was introduced on 7 November 2020 and all who work with children have a crucial role in implementing the Act. Instances of reasonable chastisement are now classified as an offence of assault and will be shared with the police.

Within our School we have a designated member of staff appointed to be responsible for Child Protection matters. If there is the possibility that a child could be at risk, the school is required to follow the Child Protection Procedures laid out for Education.

This may mean that the child is referred to Social Work, the Police or the Children's Reporter. In our school the designated staff are: Mrs Nicole Scott and if not available Mrs Fiona Smith (Hatton of Fintray School)

Remember – if you suspect a child is at risk, do not rely on someone else to notice.

If you would like to speak to someone, seek help or pass on information or concerns:

You can speak to designated staff in our school

Social Work Monday to Friday during office hours contact your Children & Families local [Social Work Office](#)

Evenings & Weekends call the Out of Hours Service on 03456 08 12 06

Police Emergency 999, Non-Emergency 101

Signs of abuse can range from poor personal hygiene and hunger to unexplained injuries or self-harm.

If a young person tells you they are being abused:

- stay calm and listen to them
- never promise to keep it a secret – tell them you must let someone else know
- remind them that they are not to blame and are doing the right thing
- report it, but leave any investigation to child protection agencies

Protecting Aberdeenshire's children and young people is everyone's business, go to:

<http://www.girfec-aberdeenshire.org/child-protection/>

13 Further Information on Support for Children and Young People

The following websites may be useful:

Getting It Right for Every Child (GIRFEC)

<http://www.girfec-aberdeenshire.org/>

Aberdeenshire Council

<http://www.aberdeenshire.gov.uk/schools/additional-support-needs/>

Support for All

<https://young.scot/campaigns/ayefeel/>

Enquire – National Parent Information Service and Helpline

<http://enquire.org.uk/>

Parent & Carer Involvement and Engagement

The term “parents” refers to anyone with parental responsibilities and others who care for or look after children or young people.

Both globally and nationally it is recognised that parents are the single most important influence on their children's development, learning and achievement. The involvement and engagement of parents in their children's learning is recognised as a key element in raising attainment, through support, help and encouragement given at home and whilst at school.

14 Parental Involvement and Engagement Strategy

The Parental Involvement and Engagement Strategy 2023-2026 demonstrates the commitment by Aberdeenshire Council to improve the quality and the extent of all parents' involvement in their child's learning and the important role they play in their child's education.

The plan sets out a vision for parental involvement and engagement for the next three years and covers a journey that a child takes from pre-birth to age 18. It highlights the leadership of those who make the difference day in and day out.

If you would like to read the Aberdeenshire Parental Involvement and Engagement strategy it can be found on Aberdeenshire Council's website here

[Parental involvement and engagement - Aberdeenshire Council](#)

15 Parental Engagement

Parental engagement is about parents' and families' interaction with their child's learning. It can take place in the home, at school or in the community: where it takes place is not important. The important thing is the quality of the parent's engagement with their child's learning, the positive impact that it can have and the interaction and mutual development that can occur as a result of that interaction.

16 Communication

The school uses a range of approaches to share information about your child's learning and progress. These include:

Use of Groupcall to text and email

Where contact details have been provided, all contacts identified as “parent contacts” will receive the information being sent. The exception to this is the morning absence text which will only be sent to the main parent contact.

Use of Parentsportal.scot for notices, permission slips and school reports

School Website: keithhall.sch@aberdeenshire.gov.uk

Social Media: <https://keithhall.aberdeenshire.sch.uk/>

Termly School Newsletters and Class Curricular Newsletters

Events

Open days/mornings/afternoons

Curricular Events

School reports

Head Teacher Updates

The school calendar highlights planned opportunities where we welcome you into school for events, and opportunities to talk about your child's progress, wellbeing, and behaviour.

17 ParentsPortal.scot

parentsportal.scot

In support of Aberdeenshire Council's ambition to offer more digital services to its residents, Aberdeenshire primary and secondary schools are rolling out a new national online service called **parentsportal.scot**. This is designed to replace the paper 'schoolbag run', giving a child's registered contacts access to a range of school-related online services, 24 hours a day, 7 days a week.

At the heart of the system, is a secure account through **mygov.scot**, which is referred to as 'My Account' or 'MyAberdeenshire' account. 'MyAberdeenshire' is already used to allow parents/carers to make online payments or receive notifications if a school closes unexpectedly. **Parentsportal.scot** and 'MyAberdeenshire'/mygov.scot will work together, making this a convenient one-stop-shop, to access all Aberdeenshire digital services.

Initially, **parentsportal.scot** will allow parents/carers to see basic information about your child(ren)'s school and twitter account as well as:-

- make a link to your child(ren)
- complete the annual data check process electronically (child's main contact only)
- update their own as well as your child(ren)'s details at any time
- to register and access for online school meal payments using one sign in (iPayImpact)

How do I sign up? - If you **already have a myAberdeenshire account** to pay for school meals through iPayImpact, you can sign up using the same sign in details at <https://parentsportal.scot/home/> You **do not need** to register or set up a new **mygov.scot** account.

If you do not have a myAberdeenshire/mygov.scot account or are looking for more information and videos on how to access to **parentsportal.scot**, please go to <https://www.aberdeenshire.gov.uk/schools/school-info/parents-portal/>

18 Learning at Home

Learning at home is the learning which happens in the home, outdoors or in the community. Your home is a great place to support learning. Your child can try out new activities or practice familiar learning, at home and in their wider community.

At our school we provide materials for you to work with your child to develop key skills at home. For explanation of this please go to our homework policy.

<https://keithhall.aberdeenshire.sch.uk/>

19 Parent Forum and Parent Council

The Parent Forum is a collective name for all parents, carers, and guardians in the school.

The Keithhall Parent Council is a group of parents selected by the Parent Forum to represent the views of all parents, carers, and guardians in the school. The Parent Council works with the school to support learning and teaching, school improvement and parental and community engagement.

Contact the the Head teacher for more information about getting involved in the Parent Council or email: keithhallschoolparentcouncil@gmail.com

20 Parents and School Improvement

Our school has a range of priorities that we work on each year which are explained in our School Improvement Plan (SIP). Parents often have helpful and creative ideas about how to improve their child's school and what can be done to improve the quality of children's learning. In our school we will consult with parents in a number of ways. These may include:

- working groups/focus groups which any interested parent is invited to be part of
- questionnaires and surveys
- consultation with the Parent Council

21 Volunteering in school

There are many opportunities for you to support learning in school. These may include:

- volunteering to share the skills and knowledge you have
- supporting children and young people in the classroom
- supporting or lead extra-curricular activities
- directly supporting with specific skills (paired reading for example)

More detail about this can be found using the link below:

<http://jobs.aberdeenshire.gov.uk/volunteer-with-us/> or contact your Head teacher.

22 Collaborating with the Community

We work with many local organisations, community groups and businesses to ensure our children and young people benefit from further resources, experiences, and

opportunities. If you are interested in working with the school, please contact the Headteacher

23 Addressing Concerns & Complaints

Aberdeenshire Council recognises the vital role that parents play in supporting their child's learning and is committed to fostering positive relationships with parents. No matter how strong partnerships are, or how good our policies are, sometimes things can still go wrong and there may be occasions where parents wish to express unhappiness or dissatisfaction with council services, policies, or staff behaviour.

<http://aberdeenshire.gov.uk/contact-us/have-your-say/have-your-say-guide/>

When a complaint is made it must be handled in accordance with the Complaints Handling Procedure which provides two opportunities to resolve issues internally. In order to maintain positive relationships, it is usually better for all if parental concerns or complaints can be resolved at school/ early years setting level as quickly as possible.

If a concern or complaint cannot be resolved at frontline resolution (Stage 1) then it will progress to Investigation (Stage 2) and a detailed investigation into the matter will be carried out. Complaints that are complex, serious, or high risk and require detailed, lengthy investigation may be dealt with at the Investigation Stage from the outset.

Once the two internal stages of the Complaints Handling procedure have been exhausted, the complainant must be directed to the Scottish Public Services Ombudsman (SPSO) to carry out an independent external review of the process. The SPSO is the final stage of the complaint procedure.

Once the SPSO reaches a decision they may contact the council with recommendations for improvement and will provide dates by which the recommendations must be implemented. The council is required to report back to the SPSO and evidence that the required action has been taken.

School Policies and Useful Information

School Policies such as the Homework Policy; Promoting Positive Relationships; our Mobile Phone etc. are published on the school website and can be found by clicking the parents tab at the top. Please go to: <https://keithhall.aberdeenshire.sch.uk/>.

All Aberdeenshire Council Education policies can be found here:

<http://www.aberdeenshire.gov.uk/council-and-democracy/about-us/service-structure/education-and-childrens-services-policy-framework/>

24 Attendance

Parents are responsible for ensuring that their children attend school regularly and arrive on time. They are also responsible for ensuring the safety of their children on their journeys to and from school except whilst on school transport where Aberdeenshire Council has clear guidelines about pupil safety. Absence of pupils travelling on school transport must also be communicated to the bus company or (where known) the bus driver.

Regular and punctual attendance is linked closely to achievement and school staff would wish to work with parents to ensure that children can achieve fully. The school is required by law to maintain an accurate record of the attendance and absence of each pupil and parents are requested to assist in this process by keeping the school informed if their child is to be absent for any reason.

Unplanned Absence

It is important to note that if a child does not arrive at school and there is no reasonable explanation provided for his/her absence then members of staff will be required to ascertain the whereabouts for the safety of the individual child. This will involve a phone call to the parent soon after 9.30am. Repeated calls will be made until the child's whereabouts have been confirmed. If contact cannot be made the situation will be assessed and it may be thought necessary to inform the local social work department. **In order to avoid causing unnecessary concern for staff and parents the importance of good communication between home and school cannot be over-emphasised.**

Parents are asked to assist school staff in the manner detailed below:

- If your child is unable to attend school through illness/other reason please telephone the school between 8:30am and 9:30 am on the first day of his/her absence or send a signed note via a brother or sister where applicable.
 - If your child is home for lunch and becomes unwell at lunchtime making them unable to return to school in the afternoon please telephone the school before the beginning of the afternoon session to inform a member of staff.
 - When you contact the school it would be helpful if an indication could be given as to the child's expected length of absence from school.
 - On your child's return to school a note should be provided explaining the reason for absence and confirming the periods of absence from the school. The note should be signed and dated.
-

- If a child feels ill they should tell their class teacher, and ask permission to report to the school office. If appropriate, office staff will arrange for them to be collected from school.

What parents needs to know:

The school follows the Aberdeenshire Attendance Policy:

<http://publications.aberdeenshire.gov.uk/dataset/council-policies-education/resource/4d0b8f53-24d8-4638-b084-17fe885d11d4>

Procedures for following up on pupil absence are based on the Education (Scotland) Act 1980 which requires by law that parents/carers ensure that children attend school regularly. The Home/School Liaison Officer has a key role to play, providing a vital link.

25 Holidays during term time.

The Scottish Government has deemed that holidays taken during term time for primary and secondary children should be recorded as unauthorised absence unless there are special, exceptional circumstances. Should you wish to remove your child from school to attend a family holiday you must inform the Head Teacher. This will be recorded as unauthorised absence though there may at times be exceptional family circumstances previously discussed with the Head Teacher. Parents are advised to limit the number of holidays taken during term time, to minimise disruption to a child's education. For annual holiday dates for Aberdeenshire schools please see the section at the back of this book, contact the school office or go to:

<https://online.aberdeenshire.gov.uk/schooltermdates>

26 Dress Code

Pupils in our school are expected to wear the following items to school as this helps to instil a sense of pride and team spirit within our school. School sweatshirt and polo shirt orders are processed in February, May and November.

School uniform consists of a navy school sweatshirt with the school logo, a red polo shirt with the school log, dark school skirt or trousers and dark school shoes (children should not wear high heeled shoes as these cause safety concerns). On PE days children are required to wear either a red or white plain t-shirt or school polo, shorts or plain dark joggers or leggings. They come to school dressed in their PE kit. A red hooded sweatshirt with the school logo can be worn on PE days and school excursions.

All clothing brought to school especially polo shirts, sweatshirts, gym shoes, indoor shoes, hats, gloves, jackets etc. should be named or marked in some way, as it is difficult for children to distinguish their own clothing from that of others.

We can also provide 'nearly new/recycled' sweatshirts for parents who would wish to make use of these, and we would encourage parents to donate used items to this bank.

All pupils require indoor shoes. These must be black or white plimsolls or trainers, no crocs, slippers, glittery or flimsy shoes please as indoor shoes are subject to a lot of wear and tear. Indoor shoes and wellies will be sent home at the end of every term

for you to check if new ones are required. We appreciate your cooperation in support of this.

Please make sure pupils have adequate clothing suitable for the weather for Outdoor learning. Anyone who wants to leave wellies in school for the term may do so.

All pupils require a reading folder which can be purchased from the school office. Reading folders cost £5.00. Cheques should be made payable to Keithhall School.

Please consider the changeable nature of weather conditions and provide your child with appropriate outerwear and footwear to suit.

With regard to safety, the wearing of jewellery is actively discouraged in our school and is not permitted during PE lessons. If your child has pierced ears, please ensure he/she can remove and replace their own earrings. Any child wearing earrings that cannot do this will be asked to put surgical tape over them for PE lessons and parents should provide a named roll of surgical tape for this purpose. Shoestring strap tops are also discouraged for safety reasons as they can catch on gym apparatus and suitable footwear should be provided.

The school requests that football team tops and designer garments are kept for home use as these can cause disagreements amongst the pupils.

All clothing brought to school should be named or marked in some way, as it is difficult for children to distinguish their own clothing from that of others.

27 Clothing Grants

Some families may be entitled to a school clothing grant per eligible child per financial year. More information about this can be found at:

<http://www.aberdeenshire.gov.uk/schools/parents-carers/assistance/school-clothing-grants/>

28 Transport

To qualify for Home-to-School Transport, Primary school pupils must reside more than 2 miles from and attend their zoned school whilst Secondary school pupils must reside more than 3 miles from and attend their zoned school.

These distances are the shortest available route from the pupil's house to the school gate and can take into account main roads (including dual carriageways), tracks and paths. Pupils will be assigned a collection point, in villages and towns and where safe to do so, pupils may have to walk up to 1 mile to the nearest collection point. Pupils who reside in rural locations are usually collected at the nearest adopted road to them (track end or roadside). School transport vehicles will not use private unadopted roads or tracks. It is the parent's responsibility to escort the pupil to and from their collection point. Application forms (Form PTU100) are completed by the school.

29 Privilege Transport

Transport provision is also made available for pupils who are not ordinarily entitled to transport. Privilege transport is provided on school transport services subject to spare seating capacity. There are 3 types of privileged transport available.

In-zone Privileged transport

Pupils who attend their zoned school but are under the qualifying mileage can apply for In-zone privilege transport. If there is suitable seating capacity available and an existing route then the application should be approved, if there is not and there is a safe walking route available to the pupil, then it may be rejected. Please also note that if seating capacity is needed for a pupil who is entitled to school transport, In-zone Privilege pupils may be give written notice and removed from transport.

In-Zone Privilege Transport – Safety

Pupils who attend their zoned school but do not qualify due to their residence being under the qualifying mileage can apply for In-zone privilege transport. If there is no safe walking route available to the pupil, they are guaranteed a seat on transport by applying for an In-zone Privilege pass. A pupil who is guaranteed in-zone privilege transport would not be removed to make room for a pupil who is entitled to school transport.

Out of Zone Privilege Transport

There is no transport entitlement to pupils who attend a school which they are not zoned for. Pupils may apply for Out of Zone Privilege transport; pupils are required to meet the nearest available school transport vehicle to them, and it is the parent's responsibility to bring the pupil to the nearest collection point. Out of Zone Privilege transport pupils may be removed, with written notice, at any time for In-Zone Privilege and Entitled transport pupils. Processing of any new Out of Zone applications received prior to the start of the new term in August does not usually begin until late September. This ensures that all entitled pupils have been allocated and there is a true indication of the remaining available seats. Please have alternative arrangements in place for the start of term and in the event the application is refused.

Applications can be made by contacting your child's school. For further information, see the Council website.

<https://www.aberdeenshire.gov.uk/roads-and-travel/school-transport/>

or contact school.transport@aberdeenshire.gov.uk

Local Bus/Registered School Bus Services

Some services operate as registered bus services. These operate on a fare paying basis and pupils will be required to pay a fare to the driver or purchase a season ticket for travel. National Entitlement cards (NEC) can also be used on these services (Young Persons' -Under 22s Free Bus Travel Scheme)

30 Early Learning & Childcare Transport

Transport to early learning and childcare settings will not be provided by Aberdeenshire Council.

31 Special Schools and Enhanced Provision

Aberdeenshire Council may provide free transport where necessary for pupils with additional support needs who access enhanced provision or community resource hub level support. In certain cases, it will be appropriate for pupils to make their own way to school by public transport and where this is authorised, bus passes are issued. Where a pupil's address falls in the delineated area of a resourced school, and is within reasonable walking distance, the Local Authority will consult with the Community Child Health Service before deciding if free transport should be provided.

32 School Closure & Other Emergencies

Head Teachers decide if and when schools should close due to bad weather or another emergency. In bad weather they will decide this after receiving information about local weather conditions. This decision can be made during any time, day or night. These guidelines outline the procedures for dealing with school closures during bad weather or other emergencies.

If children are at school...

School transport contractors have been told not to allow children to walk home alone from drop-off points under any circumstances during extreme weather conditions. If you can't meet or arrange for your child to be met, the school transport will return them to school or another place of safety.

Public service vehicles – drivers of these vehicles follow a specified route and keep to timetables – they cannot make special arrangements.

If your child attends a Nursery, Primary or Special School, which is to close early, the school will contact you by telephone. If this is not possible the school will contact your named 'emergency contact'. No child will be released from school without contact being made. It is important contact details are current and the people named are available – particularly during bad weather.

If your child attends a Secondary School, because of the large number of pupils in Secondary Schools, parents will be contacted via text/email to inform them of closure.

If you are concerned about local weather condition, contact the school. You may wish to collect your child yourself and are free to do so provided you make arrangements with the school.

Before the start of the school day...

During bad weather some staff may not be able to get to school or bus routes may not be safe to travel on – so the school may have to close. Headteachers will advise parents and carers using the following communication tools:

Outwith school hours, your local radio station is a good place to find out information on school closures. The following radio stations receive updated information every 30 mins from our website:

- **Northsound 1**
FM 96.9
-

- **Northsound 2**
MW 1035 kHz
- **BBC Radio Scotland**
FM 92.4 - 94.7 MW 810 kHz
- **Moray Firth Radio**
FM 97.4 MW 1107 kHz
- **Waves Radio**
FM 101.2
- **Original 106 FM**

Twitter

<http://twitter.com/aberdeenshire>

Aberdeenshire Council Website

<https://online.aberdeenshire.gov.uk/Apps/schools-closures/>

You also have the option to sign up to receive email alerts when your school(s) updates their closure status:

<https://online.aberdeenshire.gov.uk/myAberdeenshire/>

33 Storm Addresses

When there has been severe snowstorm during the day it may be prudent for pupils who live some distance from the normal bus routes not to attempt to reach their homes but to spend the night in alternative accommodation nearer school. It is the parent's responsibility to inform school about any pupils who may be at risk in such situations and to provide the name and address of a relative or friend who is willing to provide overnight accommodation.

34 Change of address and Parental Contact Details

To enable us to make easy contact with parents, the school would appreciate if any changes of address, telephone number or circumstances is amended via your parentsportal.scot account (see Menu section 'Your Account') or notified in writing to the School Office. It is also important that the school has details of an Emergency Contact should it prove impossible to get in touch with parents in the event of an emergency.

35 Anti-bullying Guidance

What is Bullying?

Aberdeenshire Council Education and Children's Services define bullying as the following:

Bullying takes place when the actions of an individual or group of people cause harm to someone by taking advantage of an imbalance of power within a relationship (whether perceived or real). Bullying behaviour can be persistent and/or intentional, but often it is neither.

Bullying can be verbal, physical, mental/emotional, or cyber and is behaviour and impact. It can be intentional or unintentional, direct or indirect, persistent, or a one-off incident. The impact is on a person's ability to feel in control of themselves.

Bullying can be verbal, physical, emotional, or cyber. It can be intentional or unintentional, direct or indirect, persistent, or a one-off incident. People who experience bullying behaviour feel vulnerable and/or socially isolated.

What will the school do about it?

Schools should promote consistency of response to instances of bullying behaviour using a 6-step approach. They will:

1. Record the Incident
2. Speak to the individuals involved having frank and honest dialogue
3. Speak to parents
4. Utilise Restorative approaches
5. Monitor the situation
6. Review and increase response accordingly

More information can be found in our School's anti-bullying guidance at

<http://publications.aberdeenshire.gov.uk/dataset/b9bb8c35-50b7-401e-a7e3-30833f69cc73/resource/8d5ff96d-775f-4516-9f6b-c15ce425f407/download/cusersspellascdocumentsecs-002-anti-bullying-policy-2018.pdf>.

36 School Meals

Primary School Lunches

Lunch time is an important aspect of the school day. Not only does it provide children with a nutritionally balanced meal, it enhances their social and personal development.

How does my child choose their lunch?

In class first thing in the morning children select their meal using the Smart Board. Meal options are displayed, and a choice is made by touching the chosen option shown on the Smart board. The teacher will explain to children the menu options available on the day, but it is helpful for parents of the younger children to discuss this with them before they arrive in school.

The School Catering Service provides good value meals at our schools using carefully sourced quality ingredients. There is always a wide selection of options available from the menu. The menu and helpful information can be found via this link <https://www.aberdeenshire.gov.uk/schools/school-info/meals/primary-school-meals/>

Children with medically prescribed dietary requirements

The school should be advised of any food allergies or medically prescribed dietary support during the school induction process (both primary schools and academies) or when a condition is identified.

If the child is affected and attends a primary school, they will be required to complete the online form to let us know about their dietary requirements, and request special or modified diet.

Request Special or Modified Diet

If the parent/carer can't complete the online form a paper copy can be requested from the school office and this can be provided by contacting the email below.

Parents and carers of pupils with medically prescribed dietary needs can view allergens contained in any food item on the current primary school menus.

<https://www.aberdeenshire.gov.uk/schools/school-info/assistance/free-school-meals/>

<https://www.aberdeenshire.gov.uk/schools/school-info/meals/medically-prescribed-and-special-diets/>

The School Management Team and the Catering staff will be happy to discuss your requirements. In the meantime, if you require dietary information, please email medicallyprescribeddietarysupport@aberdeenshire.gov.uk.

Special Events and Celebrations

The children enjoy eating together and we encourage learning and wellbeing during lunchtime. Occasionally we celebrate special dates and encourage all children to participate.

If your child is going along on a school trip the school catering service can provide a nutritious packed lunch for the occasion and this includes children who qualify for free school meals.

How Much does a Primary School Meal Cost?

The current price of a Primary school meal can be found via the following link -

<https://www.aberdeenshire.gov.uk/schools/school-info/meals/primary-school-meals/>

How do I pay for School lunches?

Lunches are provided free of charge for pupils from P1 to P5.

Paying for School lunches is very easy to do online.

It is very important to keep this account in credit as failure to do so triggers a time-consuming debt recovery process for the School and Catering service. We aim to support the wider Authority to be debt free and require your support in this by ensuring you top-up your account before sending a child for school meals.

Online payments system

We are encouraging parents/carers to register for online school payments to eliminate handling of cash. Parentsportal.scot is the recommended way to register to access all school payments including school meals.

Parentsportal.scot is securely linked to a myAberdeenshire account and to register follow this link <https://www.aberdeenshire.gov.uk/schools/school-info/parents-portal/>

If you are having difficulty making payments, please contact the school office as we are here to support families and will do whatever we can to assist you.

Free School Meals Information

Am I entitled to free school meals?

Click on the link to find information that explains the free school entitlement and how to go about it.

<https://www.aberdeenshire.gov.uk/schools/school-info/assistance/free-school-meals/>

If you have difficulties obtaining access to free school meals, please speak with your school and we will work together to provide assistance.

If you require any further information regarding School Catering please contact - schoolmeals@aberdeenshire.gov.uk

There are many benefits of having lunch at the Academy:

- A delicious and varied menu offering great value
- Choice of main courses each day
- A varied range of snacks and hand held options
- A range of sandwiches, salads and fresh fruit are available

37 Healthcare & Medical

Every child's health and welfare is very important to the school. Parents who have any concerns should let school know by telephoning or writing in. Alternatively, parents can inform the Health Visitor or their own GP. Parents are requested to let the school know of any hospital appointments.

Parents/carers are requested to keep children at home for 24-48 hours if the child has diarrhoea, flu-like symptoms or is clearly unwell.

Always seeks a GP's advice before sending a child back to school. Please remember that other children can be vulnerable to infection.

The school is fortunate to have a nurse in attendance to undertake Health Interviews and provide advice on health matters for pupils. The school doctor will play a vital role in monitoring a child's health and well-being.

Although our medical staff provide help and advice as appropriate, all pupils must be registered with a doctor in general practice who should be consulted about health matters as they arise. Parents should provide us with the name and telephone number of their child's doctor and an up-to-date emergency contact for themselves in case it becomes necessary for a child to be sent home during school hours because of illness.

Aberdeenshire Community Dental Service inspect P1 and P7 children in schools as part of the National Dental Inspection Programme. Written parental consent is not required for dental inspections, but parents will be informed in writing approximately one week before the inspection date.

Most pupils will at some time have a medical condition that may affect their participation in school activities. For many this will be short term, perhaps finishing a course of medication to combat an infection.

Other pupils have medical conditions that, if not properly managed, could limit their access to education. Such pupils are regarded as having health care needs. Most children with health care needs can attend school regularly and, with some support from the school can access most school activities. However, school staff may need to take extra care in supervising some activities to ensure that pupils are not put at risk.

Planning formats may include either:

- Individual Pupil Protocol (IPP) (Med form 7).
- Health Care Plan written by Health professionals for very specific medical needs.

A risk assessment should also be completed.

The above can help schools to identify the necessary safety measures to support pupils with medical needs and ensure that they and others are not put at risk.

Please find the link below to our policy and guidance: Supporting Children and Young People with Healthcare needs and managing medicines in Educational Establishments

<https://asn-aberdeenshire.org/policies-and-guidance/>

Sunscreen - As children are outdoors for learning and for play, parents should apply this prior to sending children to school or nursery. School staff do not supply, nor do they apply, sunscreen creams.

If your child has long term medical conditions such as asthma or diabetes, which may require on-going support, this should be fully discussed with the school. In certain cases specific training of staff about a child's treatment may need to be given. In addition, some children have conditions which may require occasional staff intervention e.g. severe allergic conditions such as anaphylaxis.

38 Exclusion

The foundation for schools, learning establishments and education authorities is a whole school ethos of prevention, early intervention and support against a background which promotes positive relationships, learning and behaviour. Where pupils who display behaviour, whereby attendance at the school would be likely to be seriously

detrimental to order and discipline in the school or the educational well-being of the pupils there, and where other forms of support have proved unsuccessful, the Authority exclusion policy may apply. For further information on exclusions contact the school or go to:

<http://publications.aberdeenshire.gov.uk/dataset/council-policies-education/resource/9e393d1a-2113-44c8-afb6-a517f2d495b6>

39 Educational Visits

We offer various educational visits during the school year. We believe that 'hands on' experiences greatly enhance a child's education, while also helping to make the necessary links between learning in school and life outwith school. Staff members and parent volunteers provide supervision to standards laid down by Aberdeenshire Education & Children's Services. We give parents as much notification as possible regarding visits their children will participate in.

There are grants available through the Aberdeenshire Educational Trust to help with the cost of school trips. For further information go to:

<https://www.aberdeenshire.gov.uk/benefits-and-grants/educational-grants/>

40 Instrumental Tuition

From Primary 4 onwards, tuition is available for a range of musical instruments. Most disciplines are taught in the secondary schools however not all disciplines are available in primary schools due to limited resources. Orchestral string instruments are not normally available to beginners at secondary level. Tuition is subject to availability.

Guide to starting stage by discipline:

- Woodwind - P6
- Brass - P5
- Violin or viola - P4
- Cello or double bass - P4
- Percussion - S1
- Piano or keyboard - P4
- Guitar - P4
- Bagpipes - P4
- Pipe band drum - P4

As of August 2021, we are unable to offer tuition on more than one instrument to pupils.

Music tuition fees

Scottish Government Ministers and COSLA leaders agreed to the removal of fees for the academic years 2021/22 and 2022/23 which has been supported by funding from the Scottish Government to allow existing levels of provision to be maintained.

Funding for 2023/24 has been confirmed by the Scottish Government, therefore there will be no fees for instrumental tuition during this academic session.

<https://aberdeenshire.gov.uk/schools/music-lessons/youth-music-sessions/>

Aberdeenshire Youth Music Sessions (AYMS) provide ensemble music-making opportunities for children outside of the school day.

For further information go to:

<http://aberdeenshire.gov.uk/schools/ims/>

41 Public Liability Insurance

Aberdeenshire Council holds third party liability insurance, which indemnifies the Council against claims from third parties, e.g. parents on behalf of pupils who have suffered injury, illness, loss or damage arising from the negligence of the Council or its employees. In these circumstances all claims are handled on behalf of the Council by external Insurers and Claims Handling Agents and compensation is dealt with on a strict legal liability basis. This means that there is no automatic compensation, the Council must be found negligent in order for any compensation to be offered by our Insurers and / or Claims Handling Agents.

Whilst the school will exercise reasonable care for pupils' property, it is inevitable that property will be lost or damaged from time to time. Pupils' property which is worn or brought to school or left in bags/cloakrooms is at their own risk. This includes but is not restricted to personal items such as jewellery, phones/tablets watches and bicycles. Aberdeenshire Council cannot accept responsibility for loss or damage unless caused by negligence of the school or staff.

42 School Off Site Excursion Insurance

Aberdeenshire Council has in place a School Excursion Insurance policy, whereby both pupils and teachers are covered for offsite activities / trips both within the UK and abroad (offsite meaning off the school premises). The policy covers medical expenses, loss of baggage, cancellation (as specified in the policy) , curtailment and change of itinerary (along with other sundry benefits) etc. for worldwide trips and adventurous activities (including winter sports), subject to policy terms and conditions being met.

If personal items such as jewellery, phones/tablets, watches etc. are taken on a school trip then these are taken at an individual's own risk and are not covered under the policy, unless damage or loss is caused by an Aberdeenshire Council employee.

Personal / individual cover is seen as a parental responsibility and it is your decision as to whether you feel it is appropriate to obtain this.

Where trips are booked and have subsequently to be cancelled because of any Covid related event then insurance will not be valid. This will of course be reviewed periodically.

Please be advised, however, that the Duty of Care aspect below is not insurance related:

Duty of Care

The Authority has a duty of care in respect of pupils in its charge during school hours and as such must take reasonable steps to ensure the safety of all primary and secondary pupils. This general duty of care continues if the children go home by way of school transport and ends when the child gets off the bus, at which point the parents then become responsible.

43 Data we hold and what we do with it.

The UK's Data Protection Act (DPA) 2018 enacted the EU GDPR's requirements into UK law and, with effect from 1 January 2021, [the DPPEC \(Data Protection, Privacy and Electronic Communications \(Amendments etc\) \(EU Exit\)\) Regulations 2019](#) amended the DPA 2018 and merged it with the requirements of the EU GDPR to form a new, UK-specific data protection regime that works in a UK context after Brexit as part of the DPA 2018 and is known as the 'UK GDPR'.

Aberdeenshire Council is committed to full compliance with these regulations. When you are asked for information by Education & Children's Services, we will tell you why we are collecting the information, how long we will hold it and the legal basis for gathering this information. A Privacy Notice has been issued to all schools relating to the information we hold on yourself and your child/ward.

44 The information we collect from you

Aberdeenshire Council collects personal data and information about your child in order to provide your child with a school education.

We will normally only share information (other than in child protection situations) in order to provide services for your child as part of his/her school education. We collect special category data about your child and process this because it is in the substantial public interest.

The information held by Aberdeenshire Council is used to assess, plan, coordinate, deliver, and quality assure the education services to your child. The Council does not use an automated process for making decisions about your child or the services required; decisions are made with you. We will keep this information for a period of 5 years from the maximum school leaving age of your child, as required to by The Pupils' Educational Records (Scotland) Regulations 2003, unless we have a legal responsibility to keep the information for a longer period of time.

45 Your Data, Your Rights

You have legal rights about the way the Council handles and uses your data. More information about all of the rights you have is available on our website at:

<https://www.aberdeenshire.gov.uk/online/legal-notice/data-protection/>

Alternatively, you can contact the Council's Data Protection Officer by emailing DataProtection@aberdeenshire.gov.uk or in writing to: The Data Protection Officer, Town House, 34 Low Street, Banff, AB45 1AY.

You also have the right to make a complaint to the Information Commissioner's Office, (www.ico.org.uk). They are the body responsible for making sure organisations like the Council handle your data lawfully.

The Council is required, where it is the data controller, to act in a transparent manner by providing information to individuals about how it will collect and use their personal data. Privacy Notices are an essential part of complying with this requirement. The Privacy Notice must provide information to individuals in a concise, transparent, intelligible, and easily accessible way and must be written in clear and plain language. All Education & Children's Services Privacy notices are available on our website at:
<http://publications.aberdeenshire.gov.uk/dataset/education-privacy-notices>.

46 Parental Access to Records

Access Requests are the formal process by which individuals can seek information held about them (or their children) by the council. The requests can be broad, in terms of everything that is held, or quite specific - everything held by a specific department, establishment, team or individual. We have a legal requirement to provide the information under the Data Protection Act 2018. An Access Request is wider than an Educational Record in that it will include all personal data held about a child not just their educational record. Further information can be found at:

<https://ico.org.uk/your-data-matters/>

The Pupils' Educational Records (Scotland) Regulations 2003 means that you can get access to your child's records. Details of the regulations and process for obtaining information specific to pupils are available by contacting the school directly or can be found at:

<https://education.gov.scot/parentzone/my-school/general-school-information/my-childs-record/>

47 Information Sharing

In terms of effective communication, including sharing relevant and proportionate information, where appropriate, Aberdeenshire Council in accordance with the Data Protection Act 2018 and Human Rights Act 1998 adheres to this as part of our current routine practice.

48 ScotXed

ScotXed is a term used to represent the Scottish Government's Education Analytical Services, which is part of the Scottish Government's Learning Directorate.

ScotXed have legal powers to request data with regards all children and young people being educated in Scotland's schools, with the information collected about pupils and staff in schools used to help to improve education across Scotland. They do not collect the names of your child/children and they do not receive any contact

details the school may have for you (e.g. telephone number, email address), and no information is published or made publicly available that would allow your child/children to be identified. More information on what and why they need data about your child/children, along with how they collect and store it is available in their Education Statistics Privacy Notices for parents and carers:

<https://www2.gov.scot/Topics/Statistics/ScotXed/SchoolEducation/ESPrivacyNotices>

If you have any concerns around the national ScotXed data collections, you can:

- Contact the Scottish Government's data protection officer, DataProtectionOfficer@gov.scot, or
 - The Head of Education Analytical Services, Mick Wilson, mick.wilson@gov.scot, or
 - You can write to them at Education Analytical Services, Area 2A-North, Victoria Quay, Leith, EH6 6QQ.
 - Alternatively, complaints may be raised with the Information Commissioners Office at casework@ico.org.uk.
-

Further Information

School Improvement Priorities 2023-2024

Priorities	Key Actions
To improve opportunities for all pupils to be engaged and challenged in using digital skills across all curricular areas.	<ul style="list-style-type: none"> • For all staff to have an enhanced and critically informed understanding of digital technologies to support learning. • To review and embed the 'Digital Literacy Framework' across the school. • Staff to identify digital competence gaps. • Engage with theoretical perspectives and research in the digital learning domain. • Engage in CLPL opportunities. • Staff to make effective use of digital environments to increase access to the curriculum. • To assess the needs of all the learners and to identify, evaluate, select and use digital tools and assistive technology to support pupils. To adjust and customise digital environments to personal needs.
To ensure that the school environment is inclusive, meeting the needs of all children.	<ul style="list-style-type: none"> • Introduce and embed the CIRCLE framework (universal inclusive practice and inclusive environments) throughout the school. • Staff will use the framework to ensure all needs of all pupils are being met consistently.
To provide a learning environment where; visibility of skills, meaningful discussion and reflection on skills will support pupils with their ability to understand, recognise and articulate their skills development. Adopting this as a natural part of everyday learning and teaching will empower young people to be - successful learners, confident individuals, responsible citizens, and effective contributors.	<ul style="list-style-type: none"> • All staff to re-engage with Developing the Young Workforce and Career Education Scotland (3-18) • Work with partners/companies to expand and embed work-integrated experiences. • Provide children with an enriched exposure to the world of work. • Maximise opportunities that develop the four capacities for learners, making clear links to future skills, for example meta-skills. • Provide children with opportunities to create and develop entrepreneurial skills. • As a staff we will explore www.skillsdevelopmentscotland.co.uk • We will introduce the language and visual representations of meta skills across the school. • Pupils will record skills development in pupil profiles. • The skill framework will be shared with Parents/Carers • Staff will identify skills when planning learning & teaching and explore these with all pupils. • As a staff we will regularly review the effective use of the skills framework and the tools/resources that are used as part of everyday learning and teaching.

For the full school Improvement Plan see:

<https://keithhall.aberdeenshire.sch.uk/>

Stats for Attainment

The Scottish Government have developed a “School information dashboard” that provides a range of statistical information about each publicly funded school in Scotland. This includes school attainment information about Curriculum for Excellence Levels Achieved (for primary and secondary schools)

The dashboards can be consulted

<https://education.gov.scot/parentzone/>

School Calendar & Holidays 2023 - 2024

Term 1	school opens	Tuesday 22 August 2023
	school closes	Friday 13 October 2023
Term 2	school opens	Monday 30 October 2023
	school closes	Friday 22 December 2023
Term 3	school opens	Monday 8 January 2024
	school closed	Monday 12 February 2024 (mid-term)
	school closes	Thursday 28 March 2024
Term 4	school opens	Monday 15 April 2024
	school closes	Friday 5 July 2024

School closure days 2023 – 2024

Monday 21 August 2023

Thursday 16 November 2023

Friday 17 November 2023

Tuesday 13 February 2024

Wednesday 14 February 2024

Local Holidays / Occasional Days 2023 – 2024

Friday 9 February 2024

Monday 6 May 2024 (May Bank Holiday)

Monday 3 June 2024

Aberdeenshire Council School Holiday Calendar

<https://www.aberdeenshire.gov.uk/schools/school-info/school-term-dates/>

Term 1	<p>School Event Calendar/Class Curricular Newsletter</p> <p>Parent Interviews</p> <p>Learning experiences shared on Keithhall School FaceBook page</p> <p>Parent Council Meeting</p> <p>MacMillan Coffee Morning</p> <p>P1 Curricular Information Evening</p>
Term 2	<p>School Newsletter/ Class Curricular Newsletter</p> <p>Learning experiences shared on Keithhall School FaceBook page</p> <p>Curricular Information Evening – Skill Development</p> <p>Christmas Nativity</p> <p>Parent Council Meeting</p> <p>Open Afternoon</p>
Term 3	<p>School Newsletter/ Class Curricular Newsletter</p> <p>Learning experiences shared on Keithhall School FaceBook page</p> <p>Scots Verse Competition and Burn's Day Celebration</p> <p>Parent Council Meeting</p> <p>Open Morning</p> <p>Written Reports</p> <p>Parent Interviews</p>
Term 4	<p>School- Newsletter/ Class Curricular Newsletter</p> <p>Summer Show and 150 year celebration</p> <p>Leavers Assembly</p> <p>Parent Council Meeting – AGM</p> <p>Learning experiences shared on Keithhall School FaceBook page</p> <p>Open Evening</p> <p>Sports Day</p> <p>P1 and P7 Transition days</p> <p>Standards and Quality Report 2023/24 and Improvement Planning for 24/25</p>

Term 1	<ul style="list-style-type: none"> • P4-7 Accelerated Reader • P1-P3 Emergent Literacy Phonological Awareness • Individual trackers completed for every child (Baseline assessments and predictions for end of session) • Spelling Assessment 	<p>Ongoing throughout the year:</p> <ul style="list-style-type: none"> • Motor Skills • Maths check ups • Maths assessments at the end of each focused topic • Learning intentions and success criteria are created for all curricular areas. • End of topic and termly reviews to assess knowledge retrieval and understanding of new concepts. These may be holistic, verbal, written or through teacher observations. • Pupils to be assessed when ready for Accelerated Reader
Term 2	<ul style="list-style-type: none"> • P4-7 Accelerated Reader • Whole school writing assessment (Personal writing) • Individual trackers completed • Tracking meetings (HT/CT) 	
Term 3	<ul style="list-style-type: none"> • P4 – P7 Accelerated Reader • P1 – Emergent Literacy/skills assessed/Oral language assessment progress tracked • Individual trackers completed • Whole school writing assessment (Imaginative writing) • Tracking Meetings (HT/CT) 	
Term 4	<ul style="list-style-type: none"> • Whole school writing assessment (Functional writing) • Spelling Assessment • P4-P7 Accelerated Reader • Individual trackers completed • Emergent Literacy skills assessment • Tracking meetings (HT/CT) • SNSAs (P1) • SNSAs (P4 and P7) • Overview of school attainment 	

Annual Tracking and Assessment Calendar

Map of Catchment Area

<https://gis.aberdeenshire.gov.uk/maps/map.aspx?geolocate=true&resolution=2&initialDialog=localKnowledgeDialog>

Keithhall Primary School Catchment Boundary



Catchment Boundary



Keithhall Primary School

Created by P & ICT, Aberdeenshire Council
Note: Boundary information only correct at time of publication
For further details go to www.aberdeenshire.gov.uk/localindex.asp